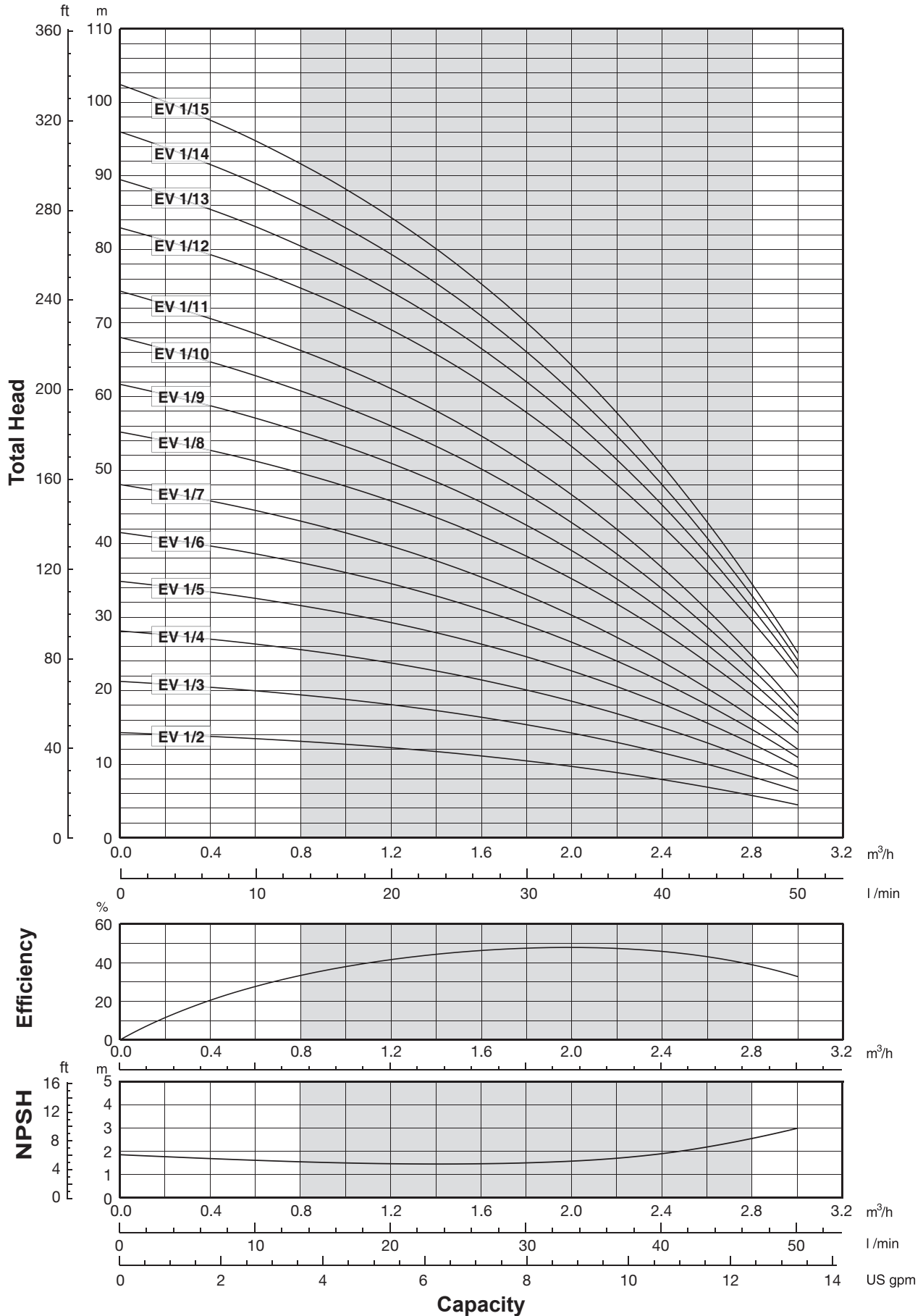


## Performance curves 50Hz

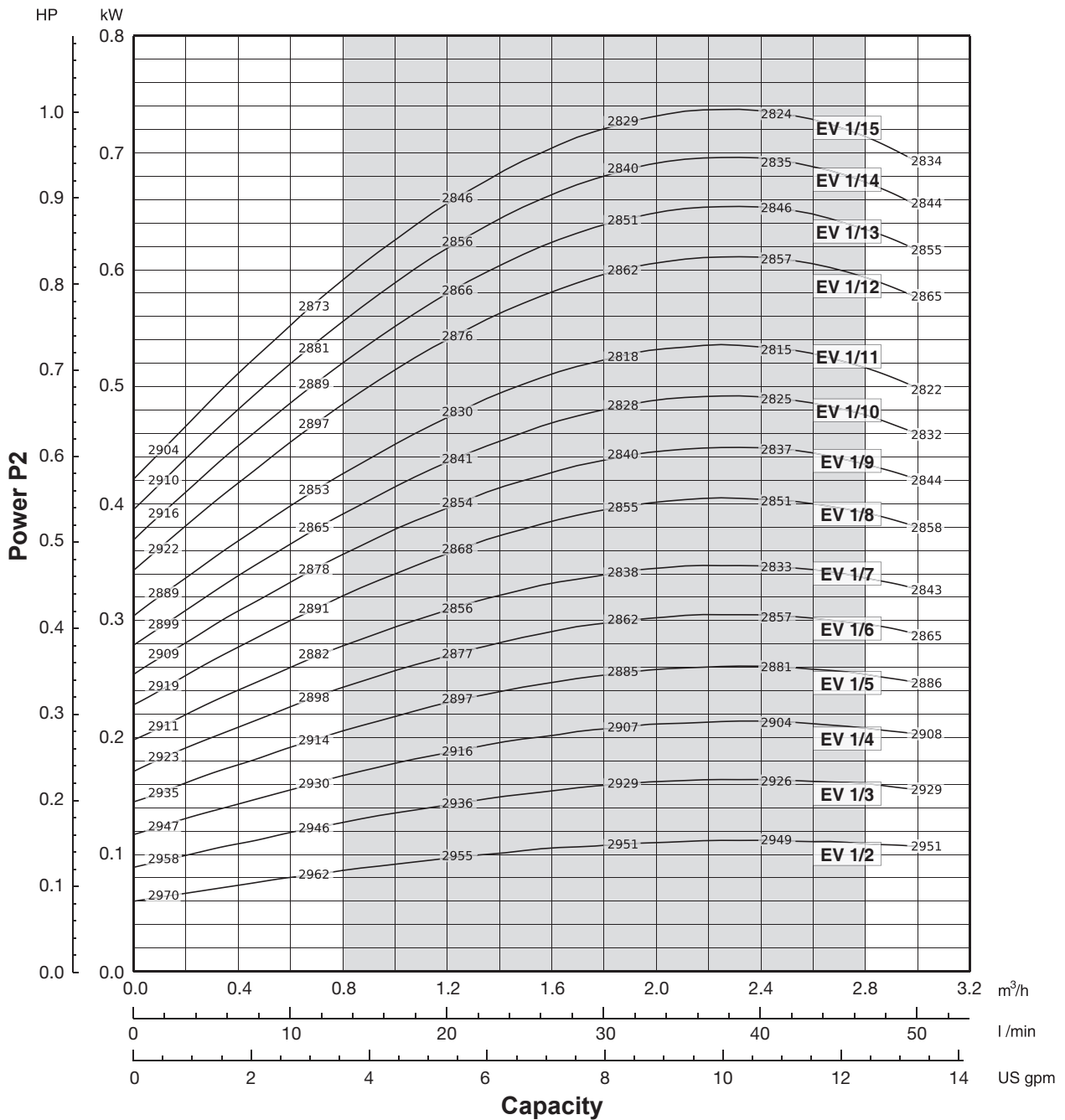
MEI ≥ 0,70



00114116 12/2014

The hydraulic characteristics are guaranteed, according to ISO standard 9906:2012, grade 3B.

It is our policy to continuously develop and improve our products, therefore, we reserve the right to amend specifications without prior notice.



Performance curves of Q, H and P depend on the rpm number according to the following formulae:

$$Q_2 = Q_1 \cdot \left(\frac{n_2}{n_1}\right), \quad H_2 = H_1 \cdot \left(\frac{n_2}{n_1}\right)^2, \quad P_2 = P_1 \cdot \left(\frac{n_2}{n_1}\right)^3, \quad \eta \text{ remains approximately the same.}$$

The rpm number related to the performance curves (Q-H-P) is indicated in the power chart.

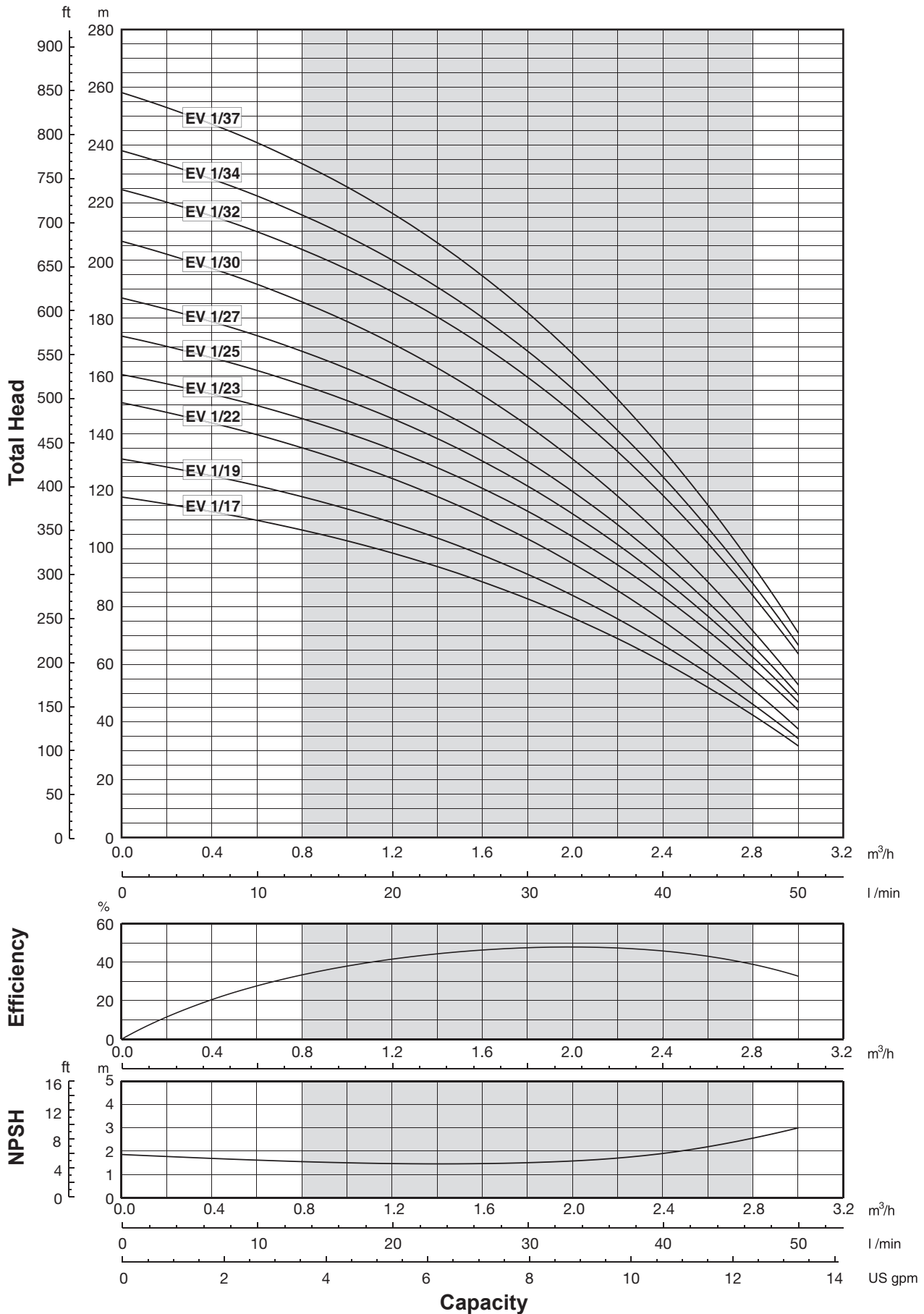
Performance curves (Q-H-P) will change in case a motor with rpm number different from indicated values is used.

Q=Capacity, H=Head, P=Power,  $\eta$ =Efficiency

00114116 12/2014

## Performance curves 50Hz

MEI ≥ 0,70

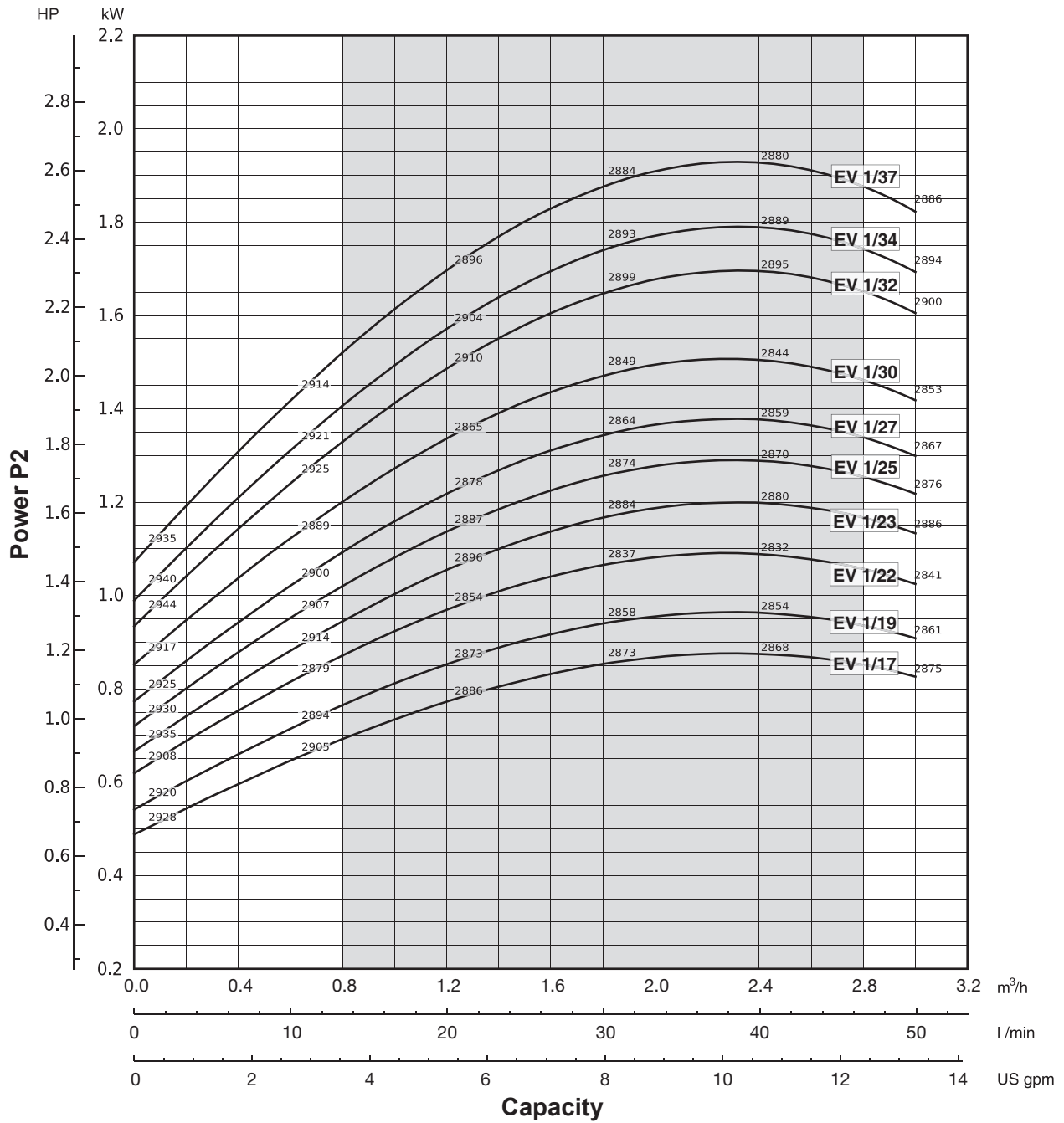


00114117 09/2015

The hydraulic characteristics are guaranteed, according to ISO standard 9906:2012, grade 3B.

It is our policy to continuously develop and improve our products, therefore, we reserve the right to amend specifications without prior notice.





Performance curves of Q, H and P depend on the rpm number according to the following formulae:

$$Q_2 = Q_1 \cdot \left(\frac{n_2}{n_1}\right), \quad H_2 = H_1 \cdot \left(\frac{n_2}{n_1}\right)^2, \quad P_2 = P_1 \cdot \left(\frac{n_2}{n_1}\right)^3, \quad \eta \text{ remains approximately the same.}$$

The rpm number related to the performance curves (Q-H-P) is indicated in the power chart.

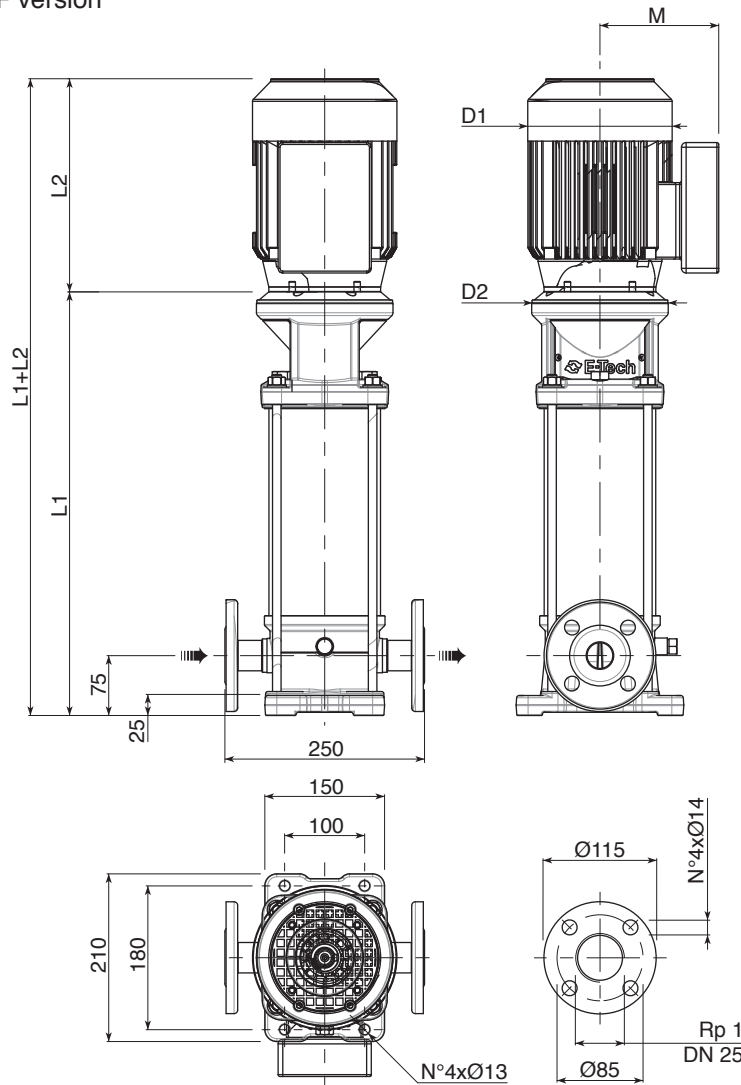
Performance curves (Q-H-P) will change in case a motor with rpm number different from indicated values is used.

Q=Capacity, H=Head, P=Power,  $\eta$ =Efficiency

00114117 03/2015

## Technical data 50Hz

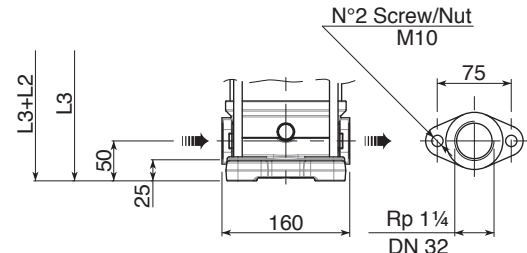
### F version



F version Round flanges on body type PN25: the pump is supplied without counterflanges (Optional accessories, including bolts and joints).

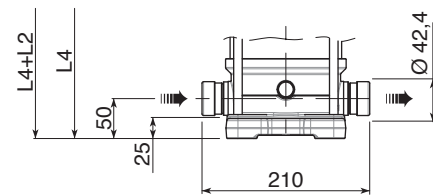
### T version

Available from EV1/2 to EV1/23



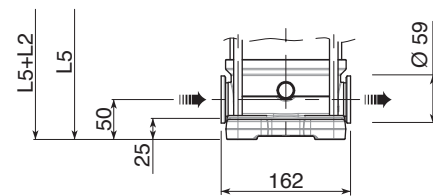
T version Oval flanges on body type PN16: the pump is supplied without threaded oval counter flanges (Optional accessories, including bolts and joints).

### V version



V version Connections with rapid fittings type "Victaulic": the pump is supplied without the collars (Optional accessories).

### C version



C version Connections with round fittings type Clamp-FlexiClamp: the pump is supplied without collars (Optional accessories).

011.401.411 02/2015

Pump Model	Motor		Dimensions (mm)									Weight (kg)			
	kW	Dim	L1 F	L2		L3 T	L4 V	L5 C	M		D1		D2	Pump	Electric Pump
				1-PHASE	3-PHASE				1-PHASE	3-PHASE	1-PHASE	3-PHASE			
EV 1/2	0,37	71	312,5	215	215	287,5	287,5	287,5	129	112	142	142	170	15	20,8
EV 1/3	0,37	71	335	215	215	310	310	310	129	112	142	142	170	15	20,8
EV 1/4	0,37	71	357,5	215	215	332,5	332,5	332,5	129	112	142	142	170	15,5	21,3
EV 1/5	0,37	71	380	215	215	355	355	355	129	112	142	142	170	16	21,8
EV 1/6	0,37	71	402,5	215	215	377,5	377,5	377,5	129	112	142	142	170	16,5	22,3
EV 1/7	0,37	71	425	215	215	400	400	400	129	112	142	142	170	17	22,8
EV 1/8	0,55	71	447,5	215	215	422,5	422,5	422,5	129	112	142	142	170	17,5	23,7
EV 1/9	0,55	71	470	215	215	445	445	445	129	112	142	142	170	18	24,2
EV 1/10	0,55	71	492,5	215	215	467,5	467,5	467,5	129	112	142	142	170	18,5	24,7
EV 1/11	0,55	71	515	215	215	490	490	490	129	112	142	142	170	19	25,2
EV 1/12	0,75	80	537,5	232	232	512,5	512,5	512,5	150	129	160	160	170	19,5	29
EV 1/13	0,75	80	560	232	232	535	535	535	150	129	160	160	170	20	29,5
EV 1/14	0,75	80	582,5	232	232	557,5	557,5	557,5	150	129	160	160	170	20,5	30
EV 1/15	0,75	80	605	232	232	580	580	580	150	129	160	160	170	21	30,5
EV 1/17	1,1	80	650	232	232	625	625	625	150	129	160	160	170	22	33,1
EV 1/19	1,1	80	695	232	232	670	670	670	150	129	160	160	170	22,5	33,6
EV 1/22	1,1	80	762,5	232	232	737,5	737,5	737,5	150	129	160	160	170	24	35,1
EV 1/23	1,5	90	795	267	267	770	770	770	160	138	180	180	170	25	39
EV 1/25	1,5	90	840	267	267	-	815	815	160	138	180	180	170	26	40
EV 1/27	1,5	90	885	267	267	-	860	860	160	138	180	180	170	27	41
EV 1/30	1,5	90	952,5	267	267	-	927,5	927,5	160	138	180	180	170	28,5	42,5
EV 1/32	2,2	90	997,5	267	267	-	972,5	972,5	160	138	180	180	170	29	45
EV 1/34	2,2	90	1042,5	267	267	-	1017,5	1017,5	160	138	180	180	170	30	46
EV 1/37	2,2	90	1110	267	267	-	1085	1085	160	138	180	180	170	31,5	47,5