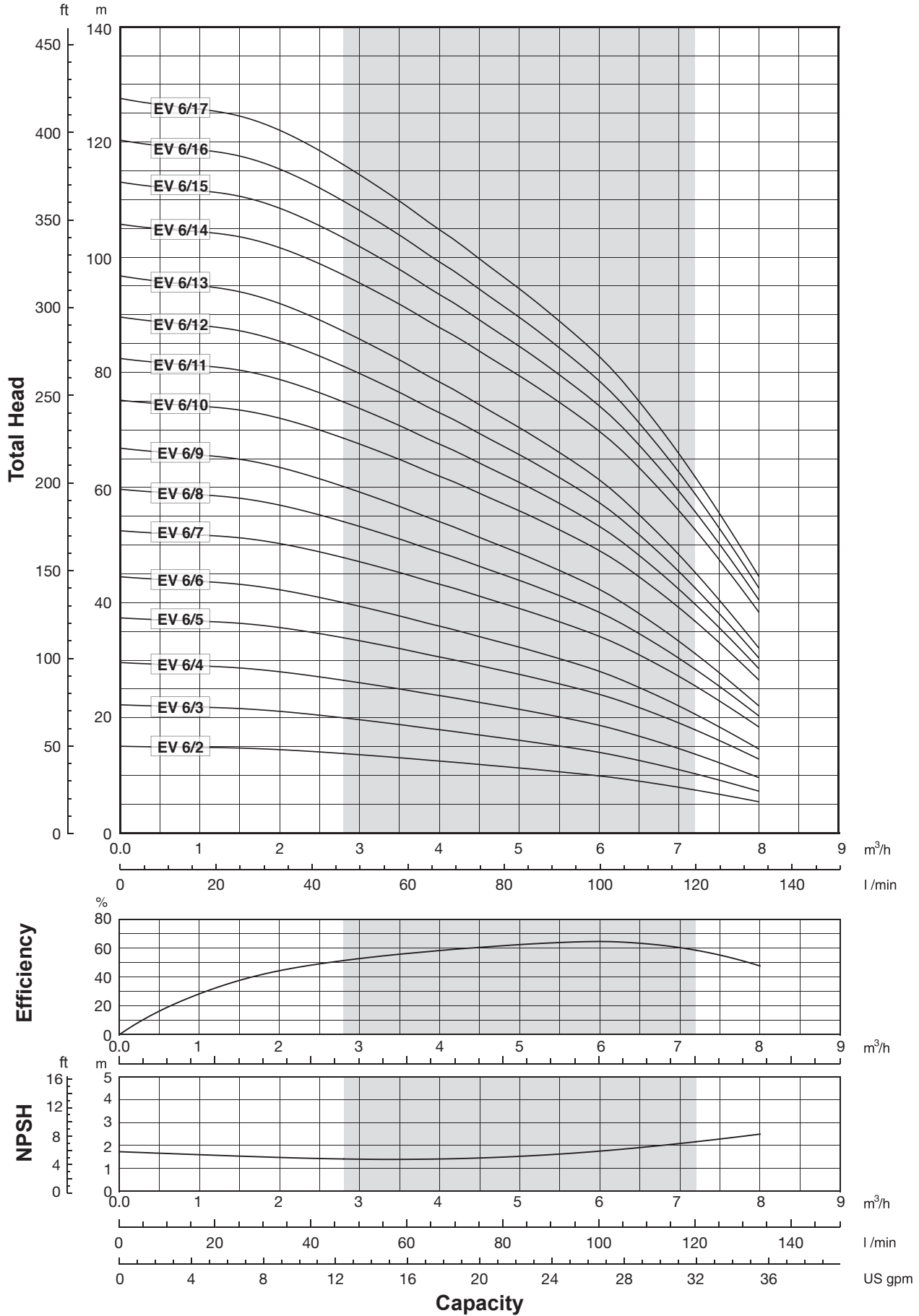


Performance curves 50Hz

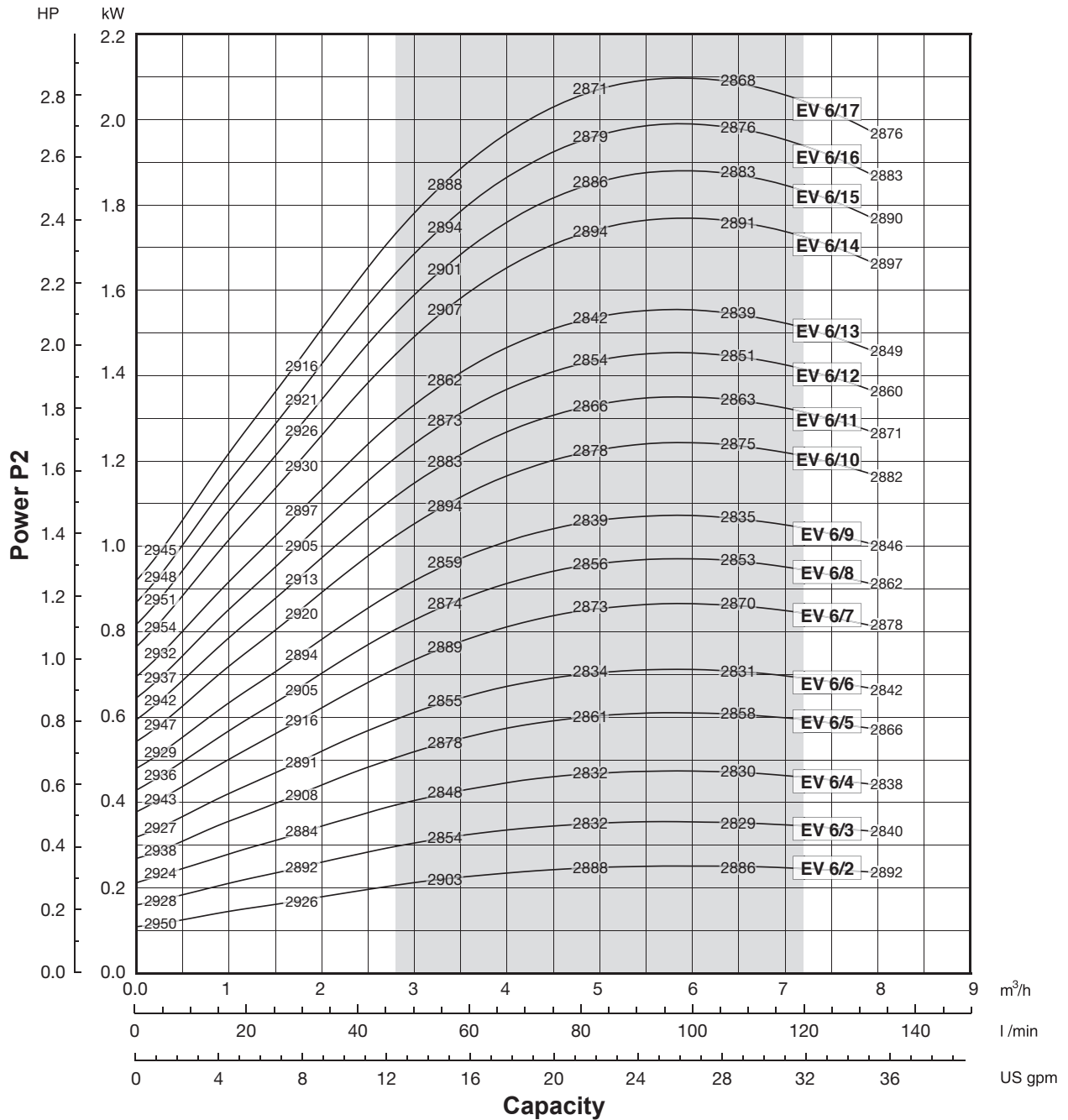
MEI ≥ 0,70



00114140 07/2015

The hydraulic characteristics are guaranteed, according to ISO standard 9906:2012, grade 3B.

It is our policy to continuously develop and improve our products, therefore, we reserve the right to amend specifications without prior notice.



Performance curves of Q, H and P depend on the rpm number according to the following formulae:

$$Q_2 = Q_1 \cdot \left(\frac{n_2}{n_1}\right), \quad H_2 = H_1 \cdot \left(\frac{n_2}{n_1}\right)^2, \quad P_2 = P_1 \cdot \left(\frac{n_2}{n_1}\right)^3, \quad \eta \text{ remains approximately the same.}$$

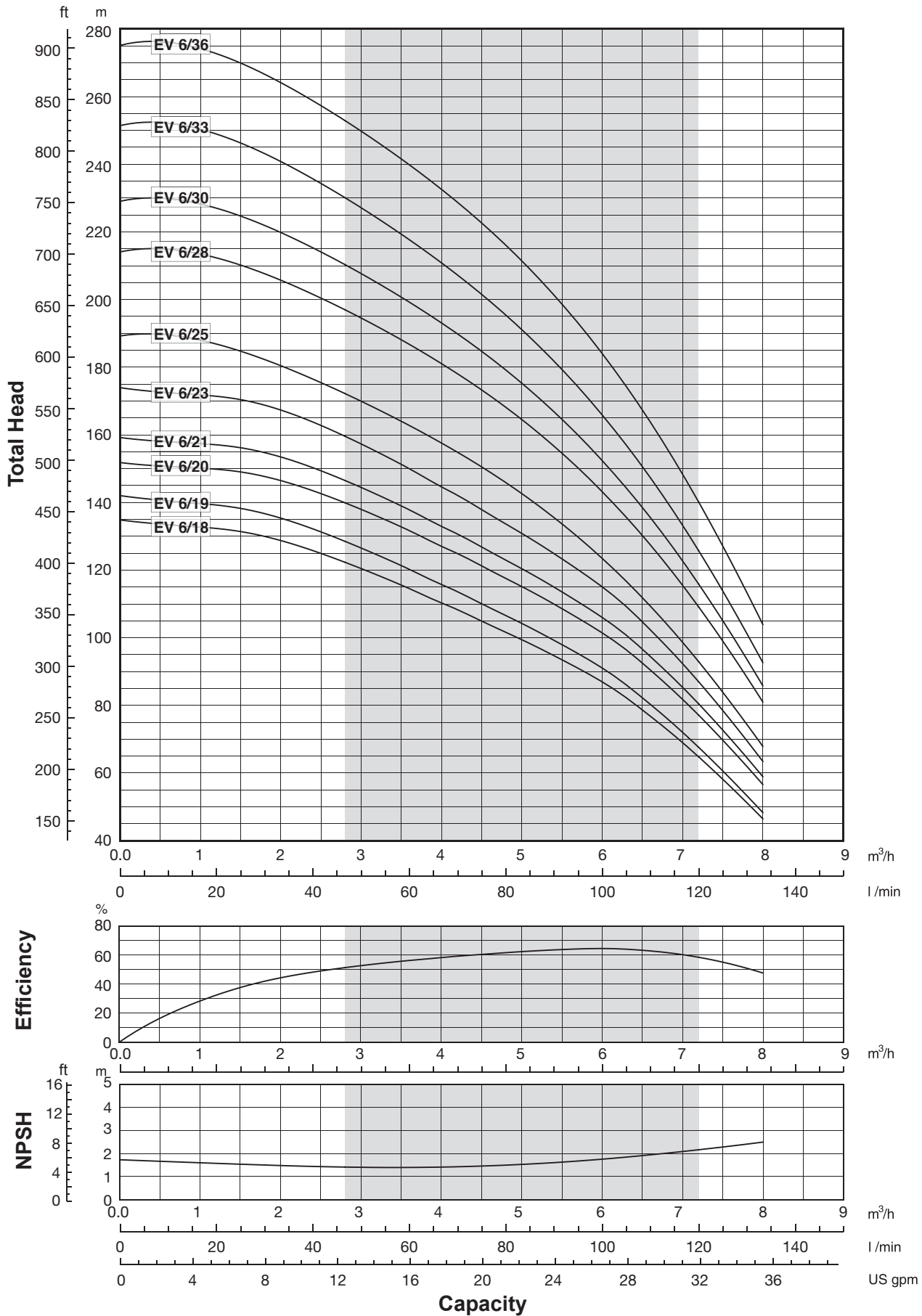
The rpm number related to the performance curves (Q-H-P) is indicated in the power chart.

Performance curves (Q-H-P) will change in case a motor with rpm number different from indicated values is used.

Q=Capacity, H=Head, P=Power, η =Efficiency

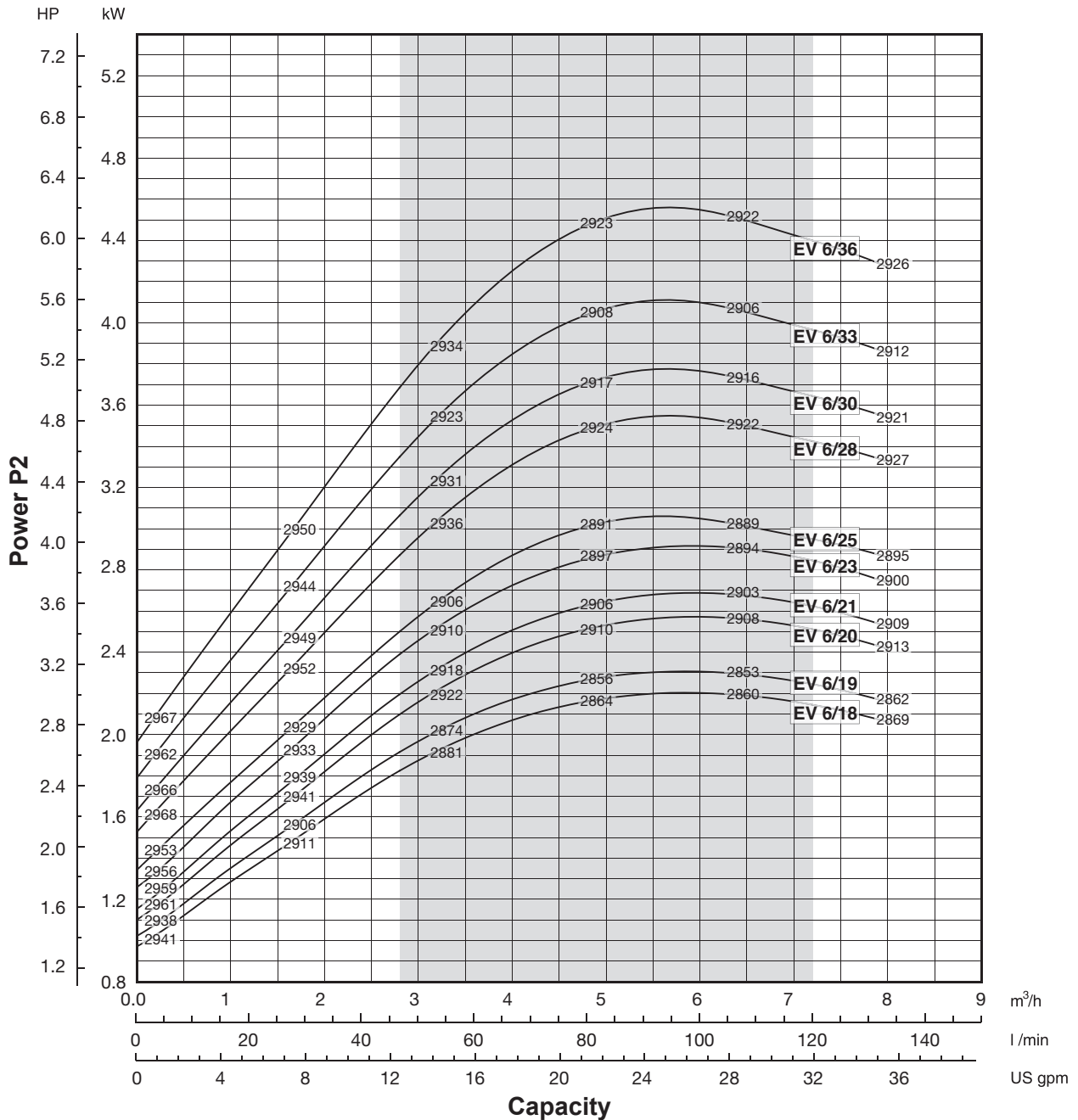
Performance curves 50Hz

MEI ≥ 0,70



The hydraulic characteristics are guaranteed, according to ISO standard 9906:2012, grade 3B.

It is our policy to continuously develop and improve our products, therefore, we reserve the right to amend specifications without prior notice.



Performance curves of Q, H and P depend on the rpm number according to the following formulae:

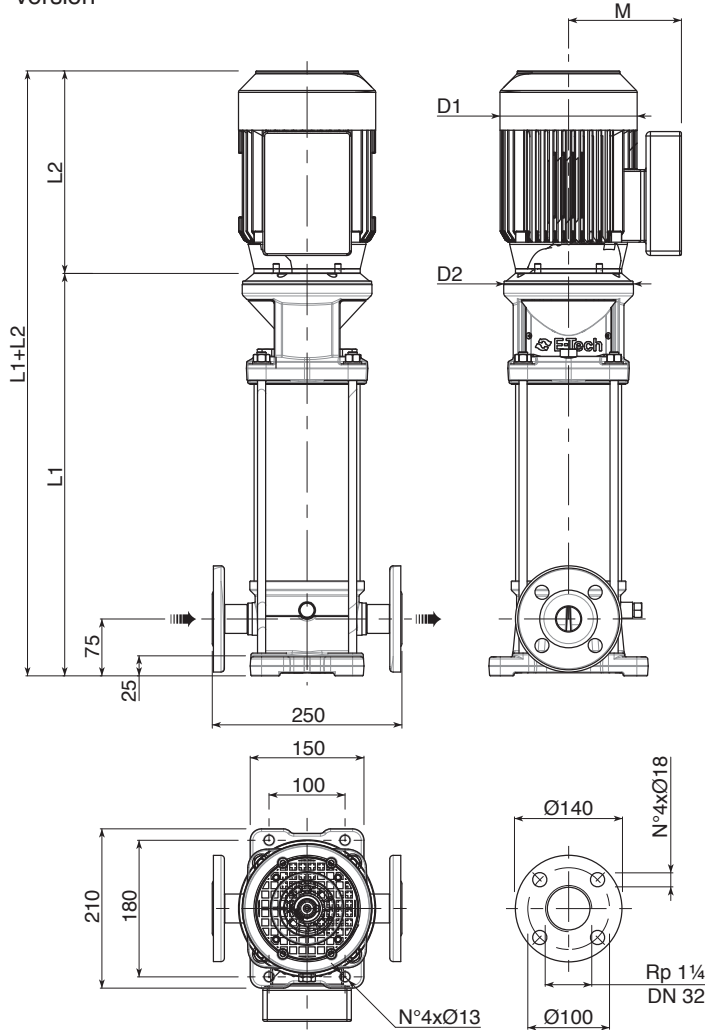
$$Q_2 = Q_1 \cdot \left(\frac{n_2}{n_1}\right), \quad H_2 = H_1 \cdot \left(\frac{n_2}{n_1}\right)^2, \quad P_2 = P_1 \cdot \left(\frac{n_2}{n_1}\right)^3, \quad \eta \text{ remains approximately the same.}$$

The rpm number related to the performance curves (Q-H-P) is indicated in the power chart. Performance curves (Q-H-P) will change in case a motor with rpm number different from indicated values is used.

Q=Capacity, H=Head, P=Power, η=Efficiency

Technical data 50Hz

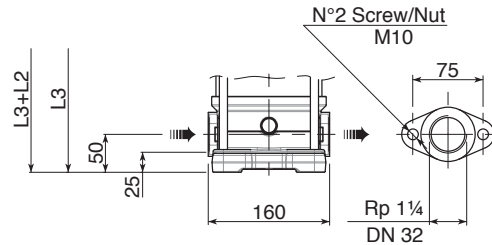
F version



F version Round flanges on body type PN25: the pump is supplied without counterflanges (Optional accessories, including bolts and joints).

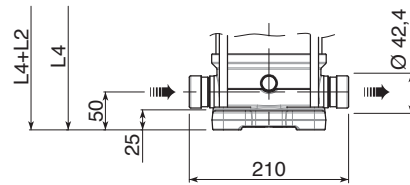
T version

Available from EV6/2 to EV6/21



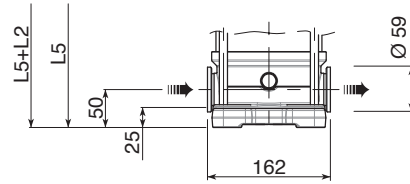
T version Oval flanges on body type PN16: the pump is supplied without threaded oval counter flanges (Optional accessories, including bolts and joints).

V version



V version Connections with rapid fittings type "Victaulic": the pump is supplied without the collars (Optional accessories).

C version



C version Connections with round fittings type Clamp-FlexiClamp: the pump is supplied without collars (Optional accessories).

0011401411 02/2015

Pump Model	Motor		Dimensions (mm)									Weight (kg)			
	kW	Dim	L1 F	L2 1-PHASE	L2 3-PHASE	L3 T	L4 V	L5 C	M 1-PHASE	M 3-PHASE	D1 1-PHASE	D1 3-PHASE	D2	Pump	Electric
EV 6/2	0,37	71	319,5	215	215	294,5	294,5	294,5	129	112	142	142	170	15	20,8
EV 6/3	0,37	71	345,5	215	215	320,5	320,5	320,5	129	112	142	142	170	15,5	21,3
EV 6/4	0,55	71	371,5	215	215	346,5	346,5	346,5	129	112	142	142	170	16	22,2
EV 6/5	0,75	80	397,5	232	232	372,5	372,5	372,5	150	129	160	160	170	16,5	26
EV 6/6	0,75	80	423,5	232	232	398,5	398,5	398,5	150	129	160	160	170	17,5	27
EV 6/7	1,1	80	449,5	232	232	424,5	424,5	424,5	150	129	160	160	170	18	29,1
EV 6/8	1,1	80	475,5	232	232	450,5	450,5	450,5	150	129	160	160	170	18,5	29,6
EV 6/9	1,1	80	501,5	232	232	476,5	476,5	476,5	150	129	160	160	170	19	30,1
EV 6/10	1,5	90	537,5	267	267	512,5	512,5	512,5	160	138	180	180	170	20	34
EV 6/11	1,5	90	563,5	267	267	538,5	538,5	538,5	160	138	180	180	170	20,5	34,5
EV 6/12	1,5	90	589,5	267	267	564,5	564,5	564,5	160	138	180	180	170	21	35
EV 6/13	1,5	90	615,5	267	267	590,5	590,5	590,5	160	138	180	180	170	21,5	35,5
EV 6/14	2,2	90	641,5	267	267	616,5	616,5	616,5	160	138	180	180	170	22	38
EV 6/15	2,2	90	667,5	267	267	642,5	642,5	642,5	160	138	180	180	170	22,5	38,5
EV 6/16	2,2	90	693,5	267	267	668,5	668,5	668,5	160	138	180	180	170	23	39
EV 6/17	2,2	90	719,5	267	267	694,5	694,5	694,5	160	138	180	180	170	23,5	39,5
EV 6/18	2,2	90	745,5	267	267	720,5	720,5	720,5	160	138	180	180	170	24	40
EV 6/19	2,2	90	771,5	267	267	746,5	746,5	746,5	160	138	180	180	170	24,5	40,5
EV 6/20	3	100	807,5	-	290	782,5	782,5	782,5	-	138	-	180	170	25,5	43,5
EV 6/21	3	100	833,5	-	290	808,5	808,5	808,5	-	138	-	180	170	26	44
EV 6/23	3	100	885,5	-	290	-	860,5	860,5	-	138	-	180	170	27	45
EV 6/25	3	100	937,5	-	290	-	912,5	912,5	-	138	-	180	170	28,5	46,5
EV 6/28	4	112	1015,5	-	306	-	990,5	990,5	-	145	-	196	170	30	56,5
EV 6/30	4	112	1067,5	-	306	-	1042,5	1042,5	-	145	-	196	170	31	57,5
EV 6/33	4	112	1145,5	-	306	-	1120,5	1120,5	-	145	-	196	170	32,5	59
EV 6/36	5,5	132	-	-	328	-	1374	-	-	160	-	225	300	53,5	87,1